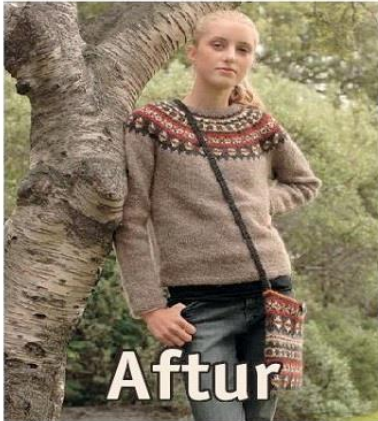


"Pas op ijslandse modellen zijn zéér verslavend!!"

## IJslands Dames Vest Létt Lopi met tasje

Breiboerderij model nr. 02-13



### MATERIAL

#### Létt-Lopi - 50 g balls

A	0085	oatmeal	7	(8 8 9 10)
B	0005	black heather	1	(1 1 1 1)
C	0051	white	1	(1 1 1 1)
D	9264	mustard	1	(1 1 1 1)
E	9434	crimson red	1	(1 1 1 1)
F	1410	orange	1	(1 1 1 1)

4½mm (US 7) circular needle 40 and 80 cm  
 4mm (US 6) circular needle 80 cm  
 4mm (US 6) and 4½mm (US 7) double pointed needles

### TENSION

18 sts and 24 rows to 10 cm measured over st st using 4½mm (US 7) needles. Check your tension and adjust needle size if necessary.

### NOTE

Body and sleeves are worked in the round from lower edge to underarm. Body and sleeves are then joined and yoke is worked in the round over entire sweater. Pattern and dec are worked from chart. Round begins at left side of body but on yoke at joining of body and sleeve on left side of back.

### Key

	= A 0085
	= B 0052
	= C 0051
	= D 9264
	= E 9434
	= F 1410
	= k 2 tog
	= no st

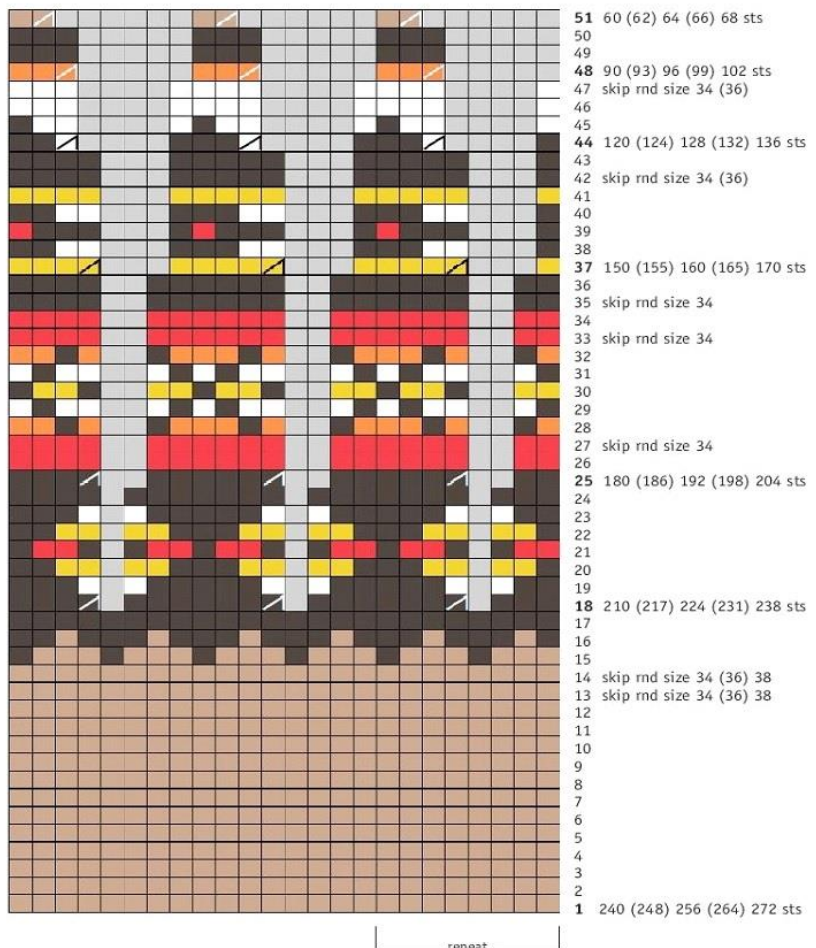
SIZES	XS	S	M	L	XL	
Chest:	91	(95	100	104	108)	cm
	36	(37.5	39.5	41	42.5)	in
Length to centre front neck edge:	56	(57	58	59	60)	cm
	22	(22.5	23	23	23.5)	in
Sleeve length to underarm:	45	(46	47	48	49)	cm
	18	(18	18.5	19	19.5)	in

### BODY

Cast on 164 (172, 180, 188, 196) sts with A and 4mm (US 6) circular needle. Join into a circle and work 6 rnds moss st. Change to circular needle 4½mm (US 7) and work st st until body measures 33 (34, 35, 36, 37) cm (13 (13.5, 14, 14, 14.5) inches) from cast on edge. Set aside and knit sleeves. Do not break yarn.

### SLEEVES ( BOTH ALIKE)

Cast on 38 (40, 40, 42, 42) sts with A using 4mm (US 6) double pointed needles. Join into a circle and work 6 rounds moss stitch. Change to 4½mm (US 7) circular needle and work st st. Inc 2 sts (1 st after first st and 1 st before last st in rnd) in every 9th (9th, 8th, 8th, 8th) rnd, 11 (11, 12, 12, 13) times up sleeve => 60 (62, 64, 66, 68) sts. Continue without further shaping until work measures 45 (46, 47, 48, 49) cm (18 (18, 18.5, 19, 19.5)



inches) from cast on edge. Slip 11 (12, 13, 14, 15) sts underarm to st holder => 49 (50, 51, 52, 53) sts. Work second sleeve.

### YOKE

Join sleeves to body as follows: With A and 4½mm (US 7) circular needle, slip 6 (6, 7, 7, 8) last sts and 5 (6, 6, 7, 7) first sts of body to st holder. K 49 (50, 51, 52, 53) sts across first sleeve. K 71 (74, 77, 80, 83) sts across body (front). Slip next 11 (12, 13, 14, 15) sts of body to st

holder. K 49 (50, 51, 52, 53) sts across second sleeve. K 71 (74, 77, 80, 83) sts across body (back) => 240 (248, 256, 264, 272) sts. Work pattern from chart and dec as shown. Change to shorter needle as rnd gets tighter. When pattern is complete there are => 60 (62, 64, 66, 68) sts left.

### NECKBAND

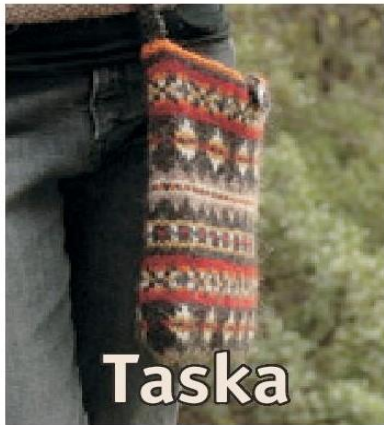
Change to 4mm (US 6) needles. Work 1 rnd st st with A and dec evenly over rnd 0 (0, 0, 2, 4) sts => 60 (62, 64, 64, 64) sts.

Work 7 rnds moss st. Work 1 rnd P. Work 6 rnds st st. Cast off loosely.

### FINISHING

Join underarm sts tog and weave in any loose ends. Fold neckband in half to WS and slip stitch in position. Rinse sweater and lay flat to dry.

Design: *Védís Jónsdóttir*



**Taska**

### MATERIAL

*Létt-Lopi* - 50 g balls

A	0085	oatmeal	1
B	0005	black heather	1
C	0051	white	1
D	9264	mustard	1
E	9434	crimson red	1
F	1410	orange	1

4½mm (US 7) circular needle 40cm  
4mm (US 6) needles  
1 button

### TENSION

18 sts and 24 rows to 10cm measured over st st using 4½mm needles.

Check your tension and adjust needle size if necessary.

### NOTE

The bag is worked in the round. Shoulder strap is worked back and forth in garter st (K every row).

### ONE SIZES

Width:	22 cm/8.5 in
Length:	26 cm/10.25 in
Shoulder strap:	120 cm/46.75 in

### BAG

Cast on 80 sts using A and 4½mm circular needle. Join in a circle and work pattern in st st from **chart**. Continue with F, 1 rnd P.

Lining: Work st st and dec 4 sts evenly over rnd => 76 sts. Work until lining is a little shorter than the bag itself, set aside.

### SHOULDER STRAP

Cast on 5 sts using B and 4mm needles. Work garter st until strap measures 120cm/47.25 in from cast on edge. Cast off.

### FINISHING

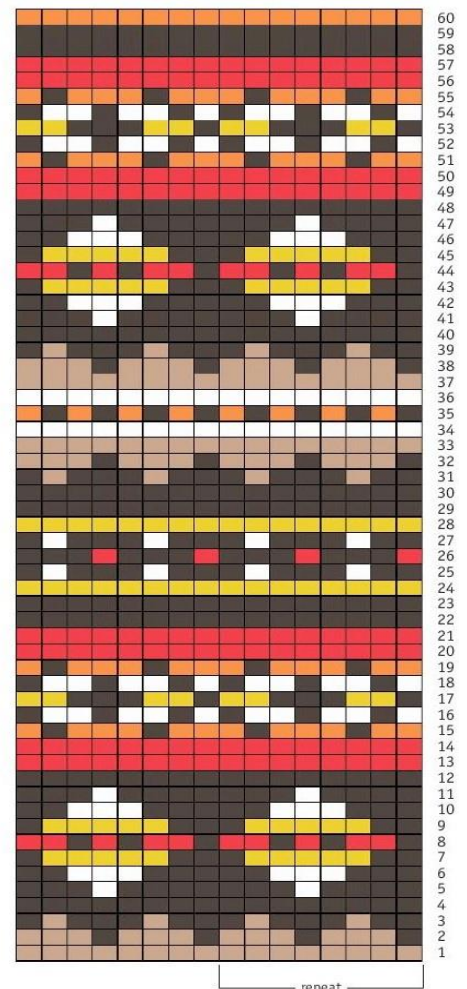
Weave in any loose ends. Graft sts at bottom of bag tog. Graft sts at bottom of lining tog. Fold lining to inside of bag.

Sew shoulder strap to bag. Sew button to centre of bag opening and make a buttonhole loop to close bag.

Design: *Védís Jónsdóttir*

### Key

■	= A 0085
■	= B 0052
■	= C 0051
■	= D 9264
■	= E 9434
■	= F 1410



Heel erg veel breiplezier!!

Al onze patronen zijn gratis! Wij willen ze heel graag gratis houden, zodat zoveel mogelijk mensen heerlijk direct kunnen starten met een project dat ze aanspreekt! Je mag ze uitdraaien, cadeau geven en zelfs op je site zetten mits met een 'de Breiboederij' link. Wij vragen met respect om te gaan met de tijd en moeite die wij doen om de patronen voor je te maken. Dus plaats altijd een link naar de pagina van de Breiboederij of vernoem onze url bij de foto en/of tekst en vermeldt dat het om een gratis patroon gaat! Verkoop onze patronen nooit en meldt de oorsprong bij artikelen gemaakt van onze patronen. Zo kunnen we iedereen blij houden!

Copyright 2014 De Breiboederij in samenwerking met Istex inc.