



Assembly instructions Classic Cabane Adirondack chair and rocker

Parts List:

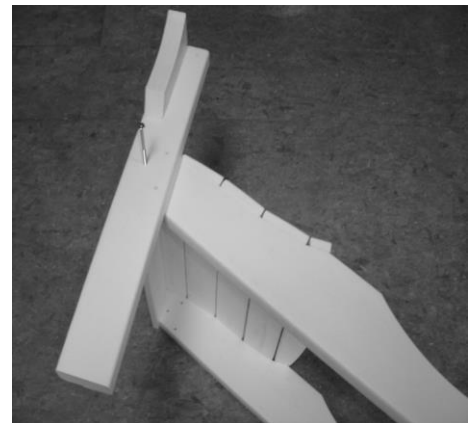
- Seat assembled
- Back assembled
- Front legs
- Arms
- Runners (rocker only)

Hardware:

- (6) 3-1/2 " bolts
- (4) 1-1/4 " bolts
- (10) flange nuts
- (4) Robertson head screws
- (2) 2-3/4 " wafer head bolts (rocker only)
- (2) 3 " wafer head bolts (rocker only)
- Screw bit

Step One: Leg Assembly

Place the assembled Seat on its side on a flat clean surface. Locate the Front Leg that you will be installing (Right Picture). Insert a long connector bolt down through the outermost pre-drilled hole in front leg and align this with the pre-drilled hole in seat assembly. Install flat washer, lock washer, and nut. Finger tighten nut onto bolt in Front Leg, then partially install the other (2) long connector bolts, washers and nuts, next to the one you have just installed. The screws have a flat head with a square segment under the head that will be pulled into the material when tightening the nut, to fix the crew. Flip the chair over and repeat process for the other side. Do not tighten at this time.





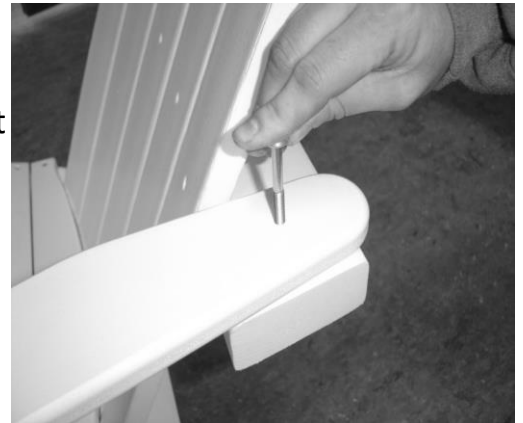
Step Two: Arm Assembly



Arms should be installed with curve side on the inside of the chair. (Left Picture). Place Arm on top of Front Leg. Align pre-drilled hole in arm with the pre-drilled hole located at the top of the Front Leg. Install a short connector bolt through pre-drilled hole in the Front Leg, then through pre-drilled hole under arm. Install flat washer, lock washer and nuts. Do not tighten at this time. Repeat process on other side.

Step Three: Arm & Back Attachment

Install (1) short connector bolt through pre-drilled hole through arm and through upper back yoke (Right Picture). Finger tighten flat & lock washers and nuts. Do not tighten at this time. Repeat process for opposite side.



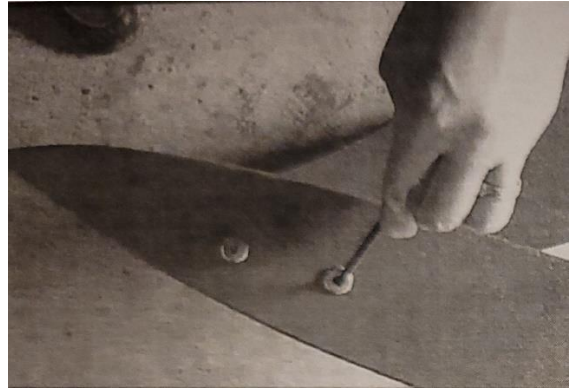
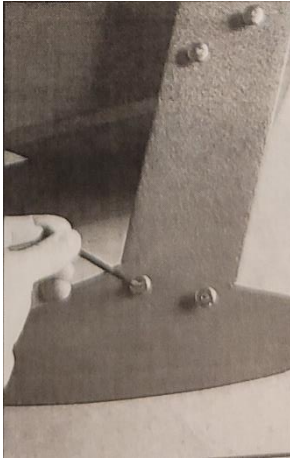
Step Four: Back Assembly



Place Back Assembly on top of mounting surface of Rear Legs, (Left Picture). Push Back Assembly forward until it's aligned with Seat Assembly. Hold Back Assembly in place and install (4) Robertson Head Screws into the base on each side. There are no predrilled holes, you need to align the horizontal bar with the sides of the base, making sure that the base of the backrest aligns with the seating surface.



Step five (only for rockers): Assembly of the runners:



Attach the runners to the front using (2) 1-1/4" wafer head bolts and to the back using (2) 2-3/4" wafer head bolts.

Step Six: Tightening of Hardware

Tighten all connections so that the square segment under the head is pulled into the material to lock the screw . **Do not over tighten!!!** Over tightening of hardware can cause damage to the item.