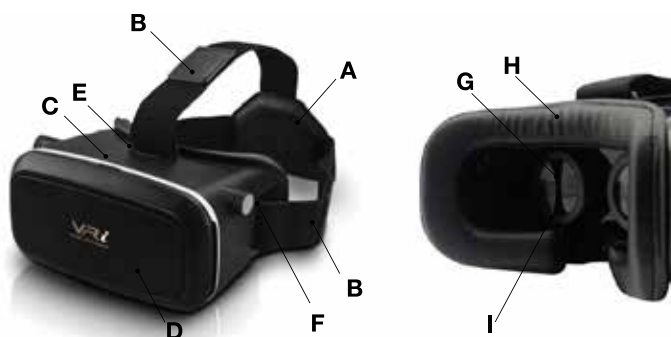


# ESCAPE FROM REALITY.

## User manual

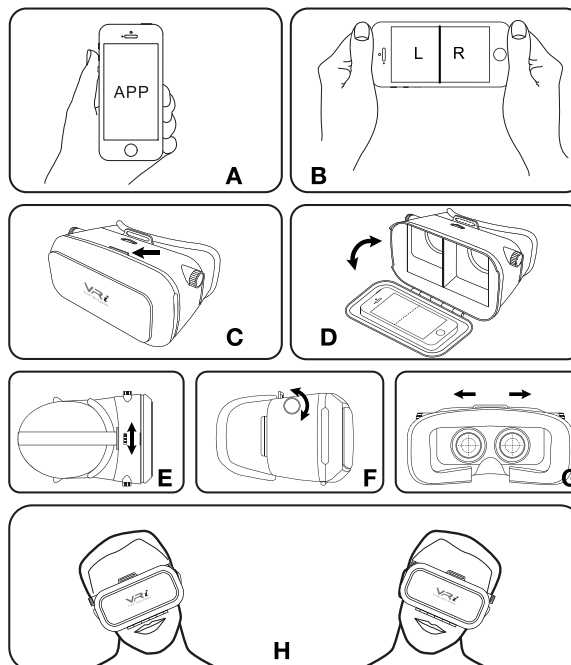
We thank you for the purchase of this VR-i virtual reality glasses. Enjoy your journey while exploring the possibilities of virtual reality with the VR-i.



- A. Comfort pad  
B. Adjustable head band  
C. Magnetic closure for phone holder  
D. Ventilation opening  
E. Button to adjust the distance between the lenses  
F. Button to adjust the distance from your eyes to the display  
G. Optical lens  
H. Ergonomic soft border  
I. Button to adjust the focal length

### B. User instructions

- 1) Before usage check that all parts are in the carton.
- 2) The VR-i glasses should be used by mobile devices with 3,5" till 6,0".
- 3) Mobile devices of both Android and iOS can be used in combination of the VR-i glasses.
- 4) Store the VR-i glasses in a dust free surrounding or in its original carton while not using.
- 5) For safe user experience, remain seated or stationed while using the VR-i glasses as the VR-i glasses blocks your view on your surroundings.
- 6) While using your VR-i glasses make sure you are not near any objects and on a solid equal floor away from stairs, floor levels, windows etc. Do not carry any dangerous or breakable equipment while using the VR-i glasses.
- 7) Do not use the VR-i glasses in occasions where focus is required such as while participating in traffic.
- 8) Remove the lens protectors before using and make sure the lenses are not scratched while using the VR-i glasses. Clean the lenses with the special cleaning towel for lenses provided with the VR-i glasses.
- 9) The VR-i glasses should be tuned to each user before usage.
- 10) Individuals that suffer from serious medical conditions (heart disease, psychiatric disorder) or in a case of pregnancy or vision abnormalities, are advised to consult their doctor prior to usage of the VR-i glasses.
- 11) It is advised to repeatedly pause while using the VR-i glasses on end. Children below 10 years are advised not to use the VR-i glasses. Children should use the VR-i glasses under supervision of an adult.
- 12) Your mobile device might increase its temperature during extensive usage.



### Contentants packing:

- 1x VR-I Virtual Reality glasses	1x additional 3M foam tape
- 1x lens cleaning towel	1x User manual

### A. WARNING!

- 1) Read this guide before usage of the VR-i glasses to ensure safe and proper usage.
- 2) Unpack the VR-i carefully and remove all packaging materials and foil. Make sure that all protective foil is being removed from the lenses before usage.
- 3) Eyeglasses can be worn in the VR-i glasses, however in case the combination of eyeglasses while wearing the VR-i glasses results in discomfort, the eyeglasses should be removed. In case of poor eyesight we recommend wearing contact lenses.
- 4) It is forbidden to use the VR-I while using and charging your smartphone.
- 5) Any consequences of incorrect and improper usage are for the user's responsibility.
- 6) People experiencing motion sickness in daily life are expected the same discomfort while using a Virtual Reality glasses.
- 7) For health matters, it is recommended not to use a Virtual Reality glasses for more than 30 minutes on end.
- 8) Do not repair the device yourself.
- 9) Do not usage any chemical substances to clean your device. Use the supplied cleaning cloth for the cleaning of lenses. In case of dirt on the lenses, make sure removing the dirt by air pressure before cleaning of the lenses.

### C. Instructions

- 1) Use your smartphone to download the required app. VR-i advises to use the VR-i glasses in a WiFi environment. In case you will install a video player or game, test if the application supports "left - right" splitscreen. (Picture B).
- 2) At the front side of the VR-i glasses, you can open the front side by pushing the lid at the top side. The closure is a magnetic closure (Picture C).
- 3) Position your phone in the smartphone holder. The smartphone holder is adjustable for different smartphone models. Check if the smartphone is positioned in the center and is fixated properly.
- 4) In case you will use a headphone, the VR-i glasses have an opening at the side for cables.
- 5) Start the VR movie or game and close the lid (Picture D).
- 6) Place the VR-i glasses on your head and adjust the strap to the optimal size. The straps are adjustable by velcro closure.
- 7) Adjust the distance between the lenses by using the button at the top side of the VR-i glasses.
- 8) Adjust the distance from your eyes to the display by using the button at the left and right side of the VR-i glasses (Picture F).
- 9) To adjust the focal length per lens, you can rotate the lens ring (Picture G).
- 10) In case you have a list of movies on your smartpone, you can scroll through the list by tilting your head to the left or right side (Picture H).
- 11) By tilting your head to the left or right side, you can also control 3D games (Picture H).

www.vr-i.nl  
EN

RoHS  
Compliant  
CE  
Made in China

VR-i  
Virtual reality glasses