

# TEST REPORT

**Applicant:** Fezy's

**Address:** Mevr brantlaan 22 5583EB Waalre

**Manufacturer:**

**Address:**

The following sample(s) was/were submitted and identified on behalf of the client as:

**HX Job No.:** HX2001013850

**Product name:** Silicone Leopard beads

**Model(S)** Silicone Leopard beads

**Trade Mark:**

**Sample Received Date:** 2020-01-06

**Testing Period:** 2020-01-06 to 2020-01-13

**Test Requested:** Selected test(s) as requested by client.

**Test Method :** Please refer to next page(s).

**Test Results :** Please refer to next page(s).

**Conclusion :** Based on the performed tests on submitted sample(s), the results of Lead, Mercury, Cadmium, Hexavalent chromium, Polybrominated biphenyls (PBBs), Polybrominated diphenyl ethers (PBDEs), Phthalates(DBP, BBP, DEHP,DIBP) comply with the limits as set by RoHS Directive (EU)2015/863 amending Annex II to Directive 2011/65/EU.

*Tim Chen*

Test/Witness Engineer



Approved & Authorized



## Test Result:

### Test Part Description

Product name	Description
Silicone Leopard beads	Watermark silica gel bead

### Remarks

- (1) 1 mg/kg = 1 ppm = 0.0001%
- (2) MDL = Method Detection Limit
- (3) ND = Not Detected ( < MDL )
- (4) "-" = Not Regulated

### RoHS Directive 2011/65/EU

#### Test Method :

- (1) With reference to IEC 62321-5: 2013, determination of Lead by ICP-OES.
- (2) With reference to IEC 62321-5: 2013, determination of Cadmium by ICP-OES.
- (3) With reference to IEC 62321-4: 2013, determination of Mercury by ICP-OES.
- (4) With reference to IEC 62321-7-2: 2017 and/ or determination of Total Chromium by IEC 62321-5: 2013 Colorimetric Method using UV-Vis.
- (5) With reference to IEC 62321-6: 2015, determination of PBBs and PBDEs by GC-MS.

Test Items	Results	MDL	Limit
Lead (Pb)	N.D.	10mg/Kg	1000mg/Kg
Cadmium (Cd)	N.D.	10mg/Kg	100mg/Kg
Mercury (Hg)	N.D.	10mg/Kg	1000mg/Kg
Hexavalent Chromium (CrVI)	N.D.	10mg/Kg	1000mg/Kg

Test Items	Results	MDL	Limit
<b>Sum of PBBs</b>			
Monobromobiphenyl	N.D.	50mg/Kg	1000mg/Kg
Dibromobiphenyl	N.D.	50mg/Kg	
Tribromobiphenyl	N.D.	50mg/Kg	
Tetrabromobiphenyl	N.D.	50mg/Kg	
Pentabromobiphenyl	N.D.	50mg/Kg	
Hexabromobiphenyl	N.D.	50mg/Kg	
Heptabromobiphenyl	N.D.	50mg/Kg	
Octabromobiphenyl	N.D.	50mg/Kg	
Nonabromobiphenyl	N.D.	50mg/Kg	
Decabromobiphenyl	N.D.	50mg/Kg	
<b>Sum of PBDEs</b>			
Monobromodiphenyl ether	N.D.	50mg/Kg	1000mg/Kg
Dibromodiphenyl ether	N.D.	50mg/Kg	
Tribromodiphenyl ether	N.D.	50mg/Kg	
Tetrabromodiphenyl ether	N.D.	50mg/Kg	
Pentabromodiphenyl ether	N.D.	50mg/Kg	
Hexabromodiphenyl ether	N.D.	50mg/Kg	
Heptabromodiphenyl ether	N.D.	50mg/Kg	
Octabromodiphenyl ether	N.D.	50mg/Kg	
Nonabromodiphenyl ether	N.D.	50mg/Kg	
Decabromodiphenyl ether	N.D.	50mg/Kg	

**Notes:**

(1) The maximum permissible limit is quoted from the directive 2011/65/EU, Annex II.

### **Phthalate**

Test Method : Determination of phthalates by GC-MS based on IEC 62321-8: 2017.

Test Items	Results	MDL	Limit
Dibutyl Phthalate (DBP) CAS#: 84-74-2	N.D.	50mg/Kg	1000mg/Kg
Benzylbutyl Phthalate (BBP) CAS#: 85-68-7	N.D.	50mg/Kg	1000mg/Kg
Bis(2-ethylhexyl) Phthalate (DEHP) CAS#: 117-81-7	N.D.	50mg/Kg	1000mg/Kg
Diisobutyl Phthalate (DIBP) CAS#: 84-69-5	N.D.	50mg/Kg	1000mg/Kg

### **Notes :**

The maximum permissible limit is quoted from ROHS Directive (EU)2015/863. IEC62321 series is equivalent to EN62321 series :

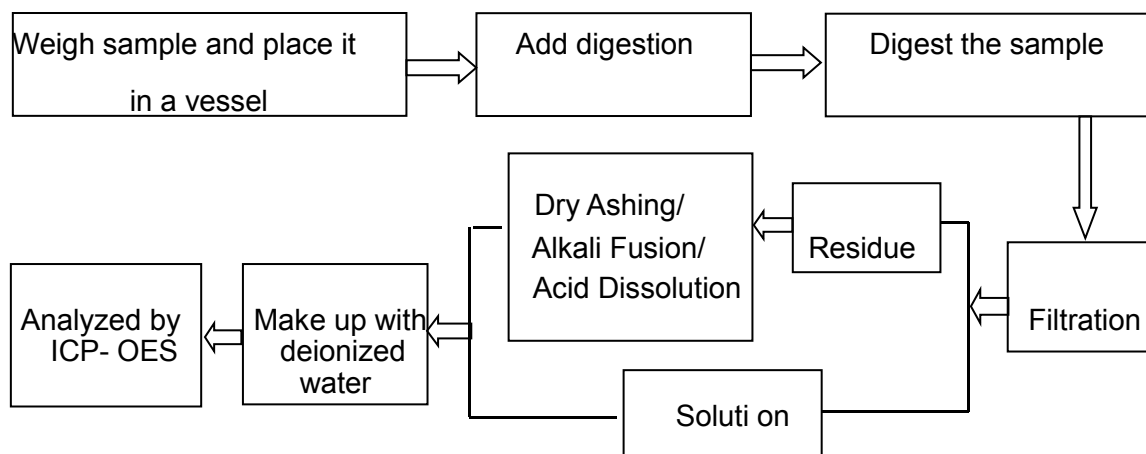
(1) Bis (2-ethylhexyl) phthalate (DEHP), Butyl benzyl phthalate (BBP), and Dibutyl phthalate (DBP) are considered as a priority for risk evaluation and substance restriction.

(2) Bis (2-ethylhexyl) phthalate (DEHP), Butyl benzyl phthalate (BBP), Dibutyl phthalate (DBP) and Diisobutyl Phthalates (DIBP) have been adopted in the draft of Commission Delegated Directive amending Annex II to Directive 2011/65/EU of the European Parliament, and the regulatory limit of each restricted substances should be 0.1%.

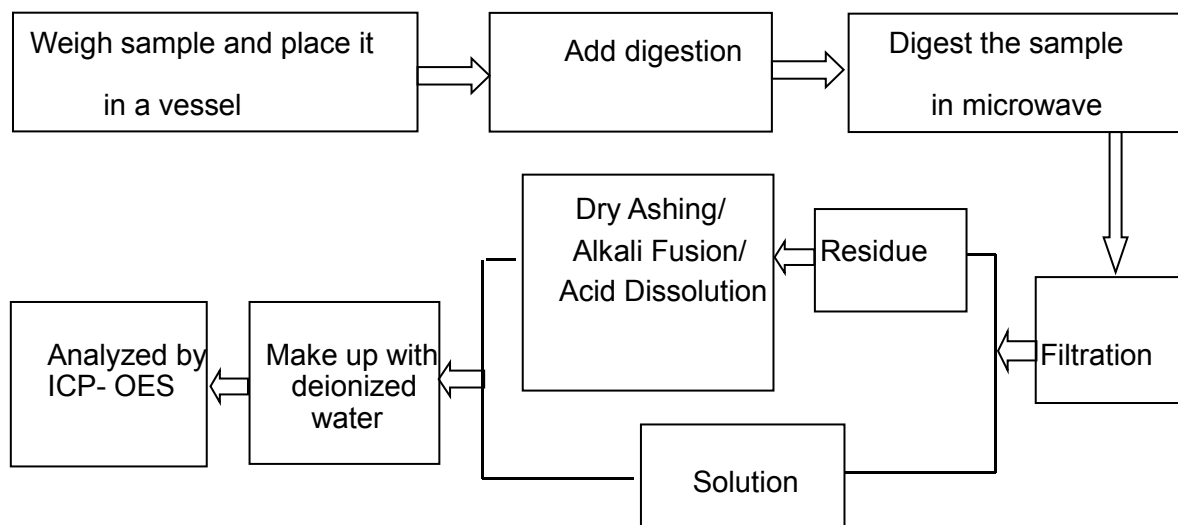
**ATTACHMENTS**

**RoHS Testing Flow Chart**

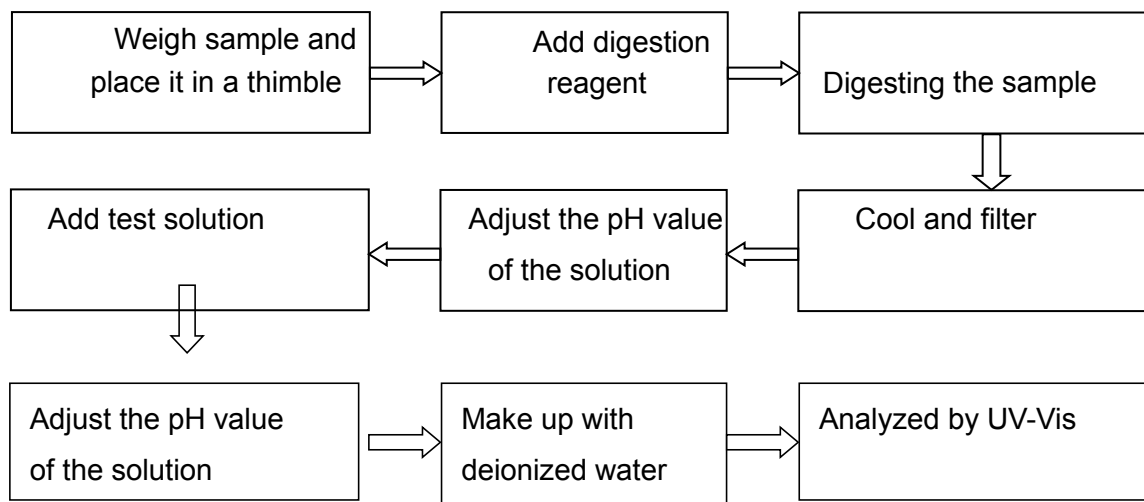
**1. Test for Cd/Pb Content**



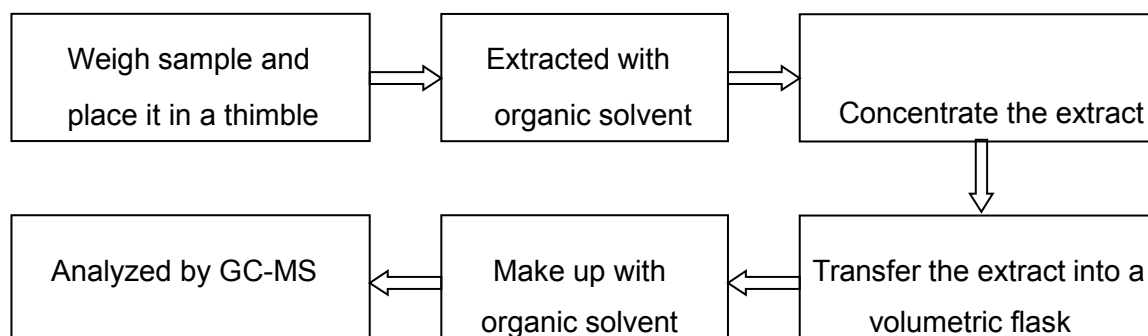
**2. Test for Hg Content**



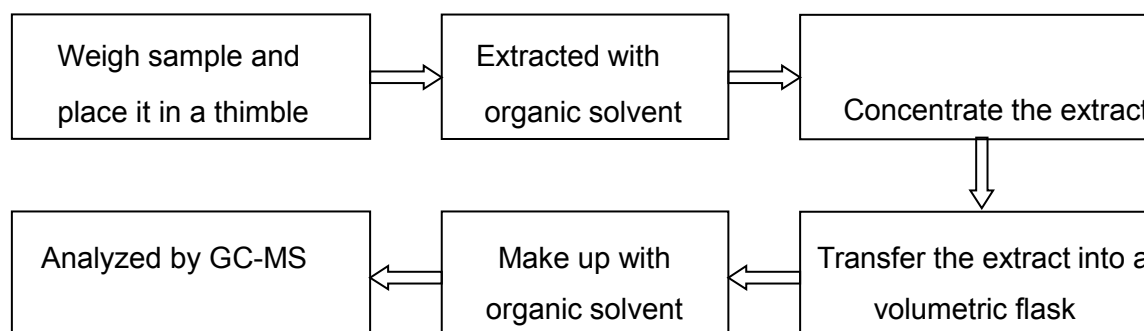
**3. Test for Chromium (VI) Content Nonmetallic material**



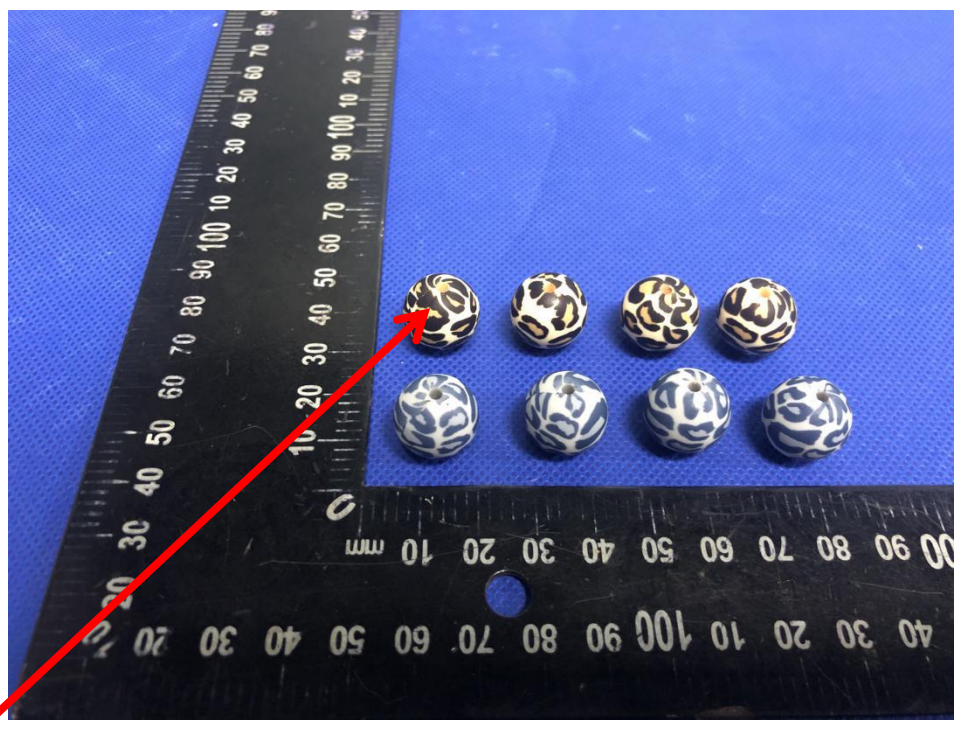
**4. Test for Polybrominated Biphenyls (PBBs), Polybrominated Diphenyl Ethers (PBDEs)**



**5. Test for DBP, BBP, DEHP, DIBP Content**



**Sample photo:**



**test sample**

**End of report**