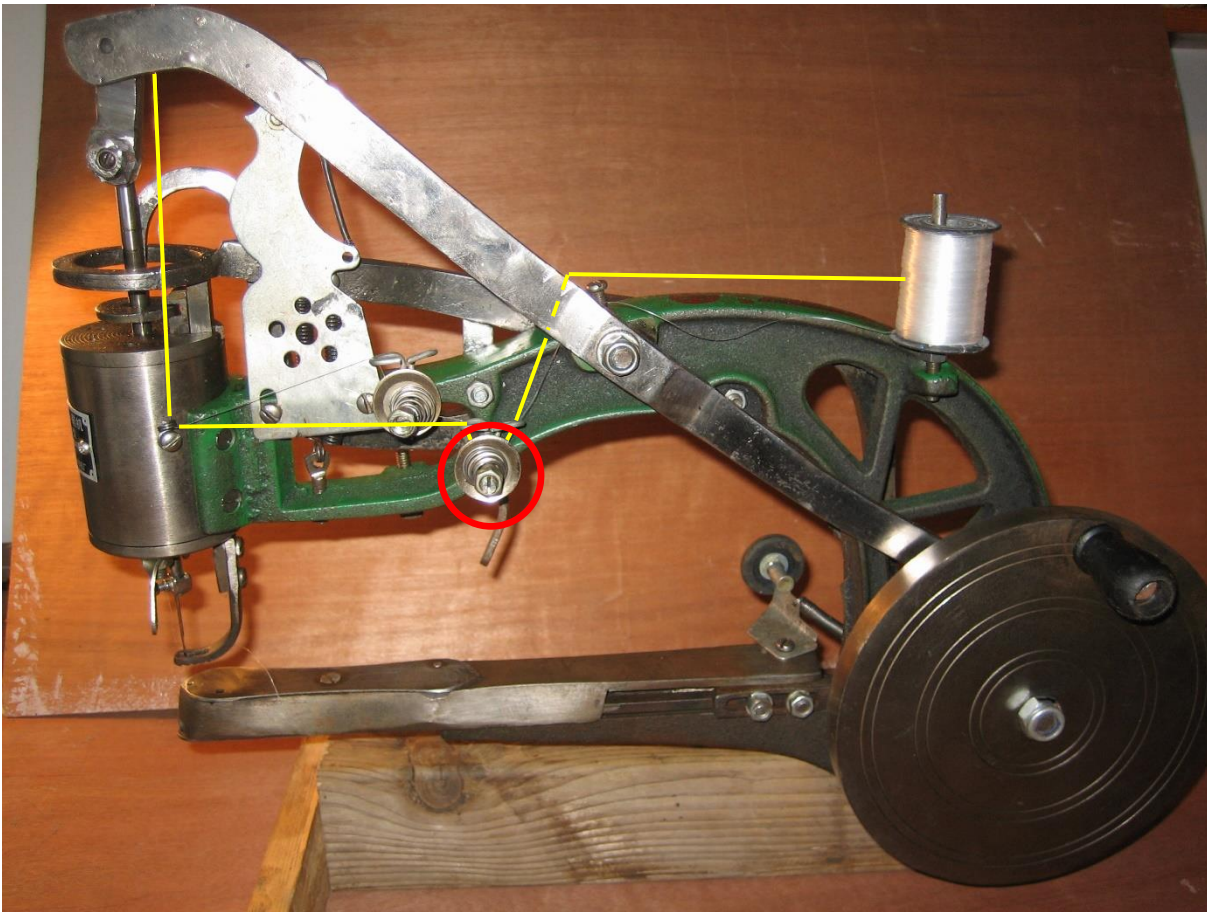
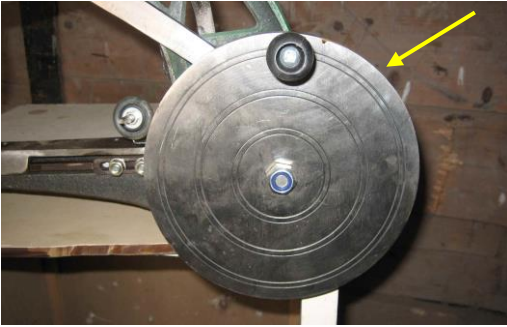


Placing the upper thread

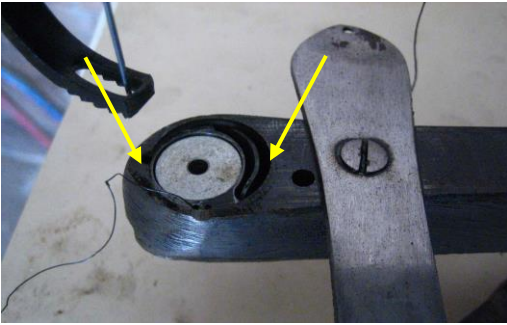
In the pictures below, the yellow lines show how the upper thread should be placed in the machine. The thread tension is controlled by loosening or tightening the thread break nut (circled in red). For extra tension you can use the second brake. You only need this second brake for sewing tough and thick material.



To set the sewing machine 'on time'



Turn the flywheel handle upwards. The foot should be up. Rotate the bobbin cover/needle plate perpendicular to the lower arm.



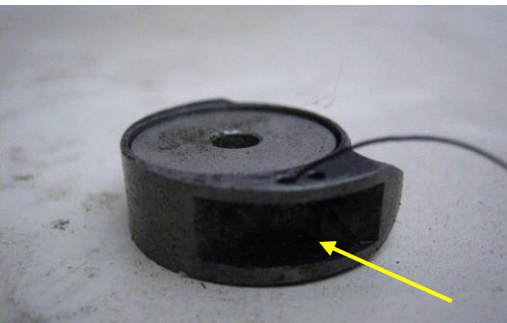
The bobbin case holder must be positioned as shown in the photo. The holder should be directly opposite the needle hole. If the bobbin case holder is not correctly positioned, you can remove it with an awl or other pointed object through the hole in the bottom and then put it back correctly.

Placing the lower thread



Put the presser foot up. Rotate the bobbin cover/needle plate perpendicular to the lower arm. Remove the bobbin and the bobbin case out of the machine. You can remove it with an awl or other pointed object through the hole in the bottom. Make sure you leave the bobbin case holder in position.

Lead the thread through the eyes like you see in the picture.

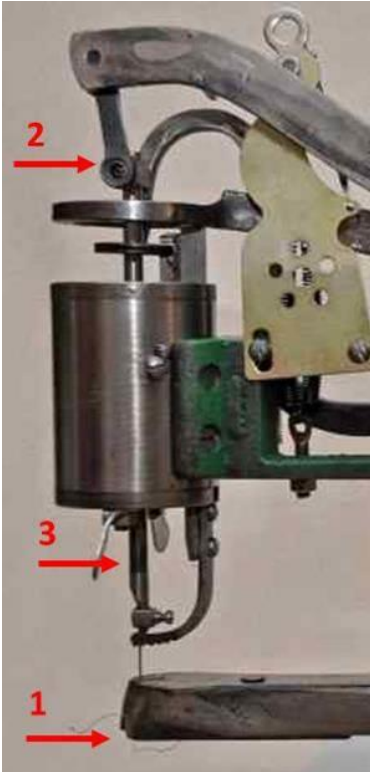


Place the bobbin back in the bobbin case. Pull the thread to see if the bobbin can rotate freely. On one of the bobbin cases there is a copper tab (see arrow). By leading the thread behind this tab the lower thread will be held tighter while sewing. You can change the tension by loosening or tightening the screw.



Put the bobbin case back in the machine. Pull the thread at least 10 mm out of the bobbin and place it in the notch. Close the bobbin cover/needle plate.

Checking and adjusting the needle depth



Place the needle, by turning the flywheel, to its lowest possible point. Use your finger to check if you can feel the needle in the needle hole at the bottom of the lower arm (number 1). You should feel the needle just a little bit.

On top of the thread shaft, where the thread goes in, there is a screw (number 2). Loosen the screw and adjust the height of the thread shaft (number 3) until you feel the needle as you should.

Please pay attention that you do not turn the shaft, because this will have effect on the position of the needle.