



# Drapey Knit dress

Designed to flatter all figures, this elegant dress has a fantastic silhouette inspired by contemporary Japanese cutting styles. Made up of just three main body pieces, it features kimono sleeves, hidden pockets and a stylish front pleat detail

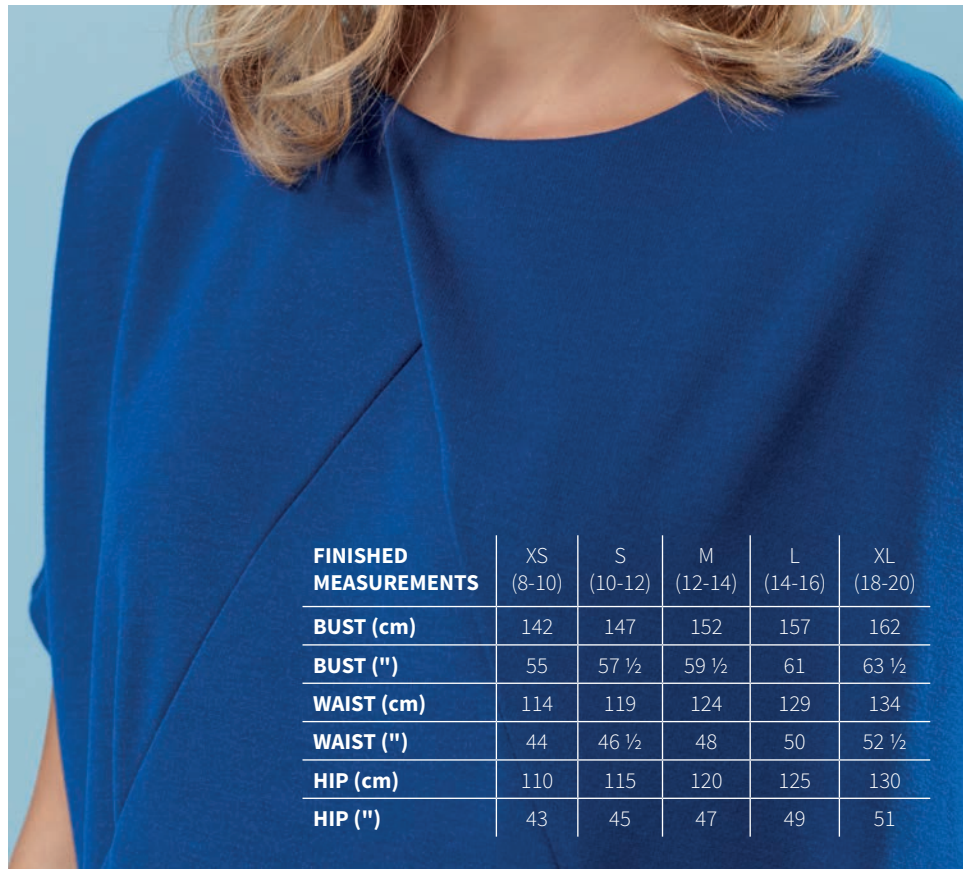
Project: **CLAIRE-LOUISE HARDIE**



**CL says:**

“This is the favourite of my patterns from the new Sewing Book, Fashion With Fabric.

It’s designed to be made up in double-knit jersey, often called Ponte Roma, which is a stable knit suitable for anyone scared of sewing stretch. This is a great dress for transitional seasons, as it works well on its own or with chunky tights and a fitted top”



FINISHED MEASUREMENTS	XS (8-10)	S (10-12)	M (12-14)	L (14-16)	XL (18-20)
BUST (cm)	142	147	152	157	162
BUST (")	55	57 ½	59 ½	61	63 ½
WAIST (cm)	114	119	124	129	134
WAIST (")	44	46 ½	48	50	52 ½
HIP (cm)	110	115	120	125	130
HIP (")	43	45	47	49	51

**Skill level:** ♥♥♥

**MATERIALS:**

- ♥ stable double-knit jersey fabric: 1.9 m (2 yd) fabric 150 cm (60 in.) wide or 2.5 m 114 cm of 45"-wide fabric
- ♥ 20cm lightweight iron-on knit or bias interfacing
- ♥ co-ordinating sewing machine thread
- ♥ ballpoint or stretch twin needle
- ♥ basic sewing kit

**FABRIC SUGGESTIONS:**

- ♥ Stable double-knit jersey such as Ponte Roma. Not suitable for Lycra or any fabric with an excessive amount of stretch.

**Note:** 1.5cm seam allowances included throughout, unless otherwise stated. The dress can be sewn either a zigzag stitch on a regular

**How to make:**

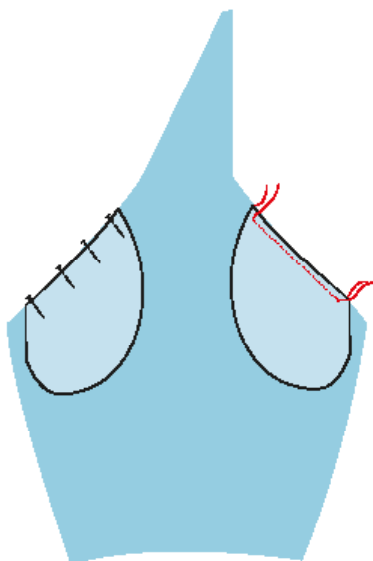
Note that all widths will require the front pieces to be cut out on a single layer of fabric with the right side of the fabric facing up and the pattern pieces facing right side up. Trace off the pattern pieces – centre front, left front, right front, back, front facing, back facing and pocket. Cut out and transfer any pattern markings to the fabric.

**PREPARE THE FACINGS**

1 Following the manufacturer’s instructions, apply lightweight knitted interfacing to the wrong side of the front and back facings.

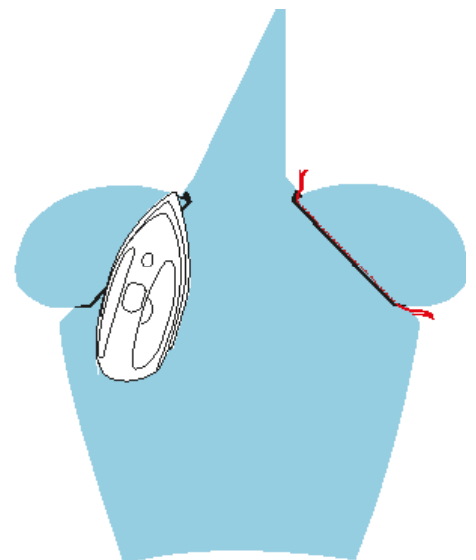
**ATTACH THE POCKET BAGS TO THE CENTRE FRONT**

2 With RST, matching the dots, pin and sew the pockets onto the centre front section, sewing between the marked points only.



3 Working from the RS, press the pockets and seam allowances away from the body

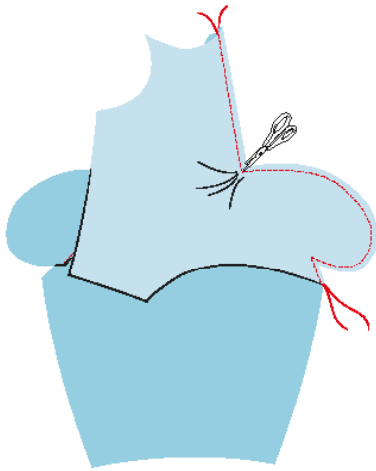
section and then understitch between the dots on the pocket side of the joining line, not the centre front.



**ATTACH THE LEFT AND RIGHT FRONTS TO THE CENTRE FRONT**

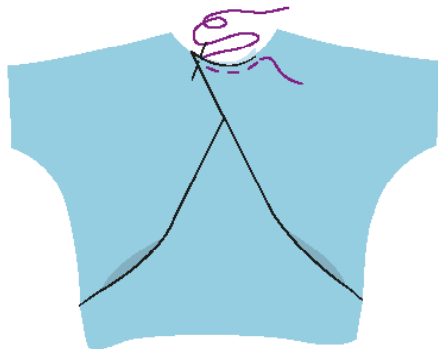
4 With RST, making sure the raw edges and pockets align, lay the left front over the centre front. Pin along the seam and around the pocket. Machine-sew, pivoting at the previously stitched points around the pocket. Clip into the corner of the left front at the pocket junction so that you can press the seam

allowance open. Repeat Step 3 to attach the right front to the other side of the centre front.



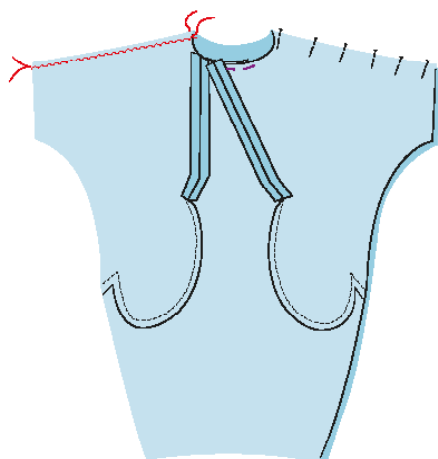
**CREATE THE FRONT PLEAT**

5 Fold the left front pleat along the marked fold line, then take the fold line over the centre-front seams you've just sewn towards the right-hand side, matching up all three centre front circle marks. Tack around the front neckline to secure the pleat.



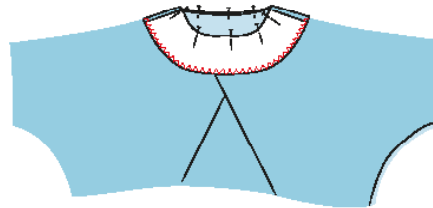
**STITCH THE SHOULDERS**

6 With RST, pin and stitch the front of the dress to the back at the shoulder seams. Press the seams towards the back.



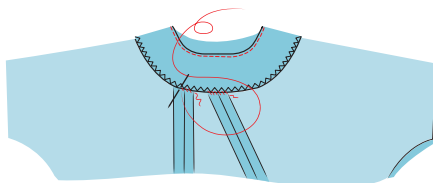
**MAKE THE FACINGS AND FINISH THE NECKLINE**

7 Zigzag-stitch or overlock the lower hem edge of the facings to neaten them. With RST, pin then stitch the facings together along the short side edges to form a loop. Press the seams open. With RST, pin the facings around the neckline, matching the centre fronts and centre backs and matching the shoulder seams of the dress with the side seams of the facings. Sew in place.



8 Grade the seam allowance around the neckline and clip into the curves.

9 Working from the RS, under-stitch the facing to the seam allowance around the neckline. Turn the facing to the inside of the dress and press from the WS, making sure that the seam sits just inside the neck. Secure the hem of the facing to the shoulders and the front seams with a few small hand stitches.

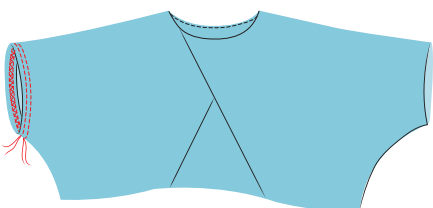


**JOIN THE SIDE SEAMS**

10 Pin and sew the front to the back at the side seams, from the sleeve down to the hem in one continuous line of stitching.

**HEM THE DRESS**

11 Press under a 1.5cm hem around the sleeve ends. Fit a ballpoint or stretch twin needle to your machine. Working from the RS, pin and machine the hem in place.



12 Hem the bottom of the dress in the same way as the sleeves, pressing under a 2.5cm hem.

